



ClearPort

Forney ClearPort observation ports are designed for installation on HRSG ducts and other hot furnaces. Forney ClearPorts provide clear unobstructed view of the duct burner flames as well as pressure parts downstream.



www.forneycorp.com

PRODUCT OVERVIEW

Forney ClearPort observation ports are designed for installation on HRSG ducts and other hot furnaces. Forney ClearPorts provide clear unobstructed view of the duct burner flames as well as pressure parts downstream. Forney ClearPorts includes a butterfly style isolation plate to restrict heat conduction towards the glass. The glass pane is suitable for high temperatures to prevent any discoloration over service life. Butterfly style isolation plate is easy to operate with a spring-loaded side handle. When released, the spring ensures the isolation plate returns to closed position. A cooling air inlet port is provided for user to connect cooling air at specified pressure and flow rate. Forney ClearPorts are Available in 4", 6" and 8" sizes and are designed to install on a standard #150 ASME flange.

FEATURES AND BENEFITS

- **Fused Silica Quartz Glass**

The Quartz Glass can handle temperatures up to 1,800°F and pressures up to 100 psi.

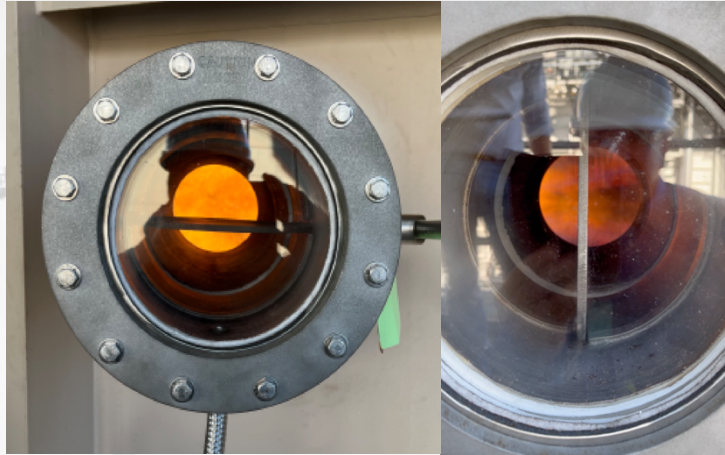


Figure 1 The large viewing area provides a clear view of the boiler internals

- **30 4 Stainless Steel Construction**

The Forney ClearPort remains clean and free of rust and corrosion giving unsurpassed reliability.

- **Ease of Operation**

The rotating handle gives the user effortless operation and with a spring return, ensures the isolation plate is closed when not viewing. A must for safety in case of upset conditions occur.



Figure 2 Easy grip, side handle allows the operator to quickly open the Clear Port.

- **Class 150# ANSI Flange Mounting**

Used in low to medium-pressure pipe application, this type of connection is commonly used in mounting round observation ports.

- **Maintenance Free**

The Butterfly design and the stainless-steel construction makes the Forney ClearPort very reliable for many years.

- **Cooling Air Port**

The 1/2" NPT Cooling Air Port makes for a typical air connection.

- **Ceramic Insulation**

Forney ClearPort's ceramic insulation provides thermal breaks.

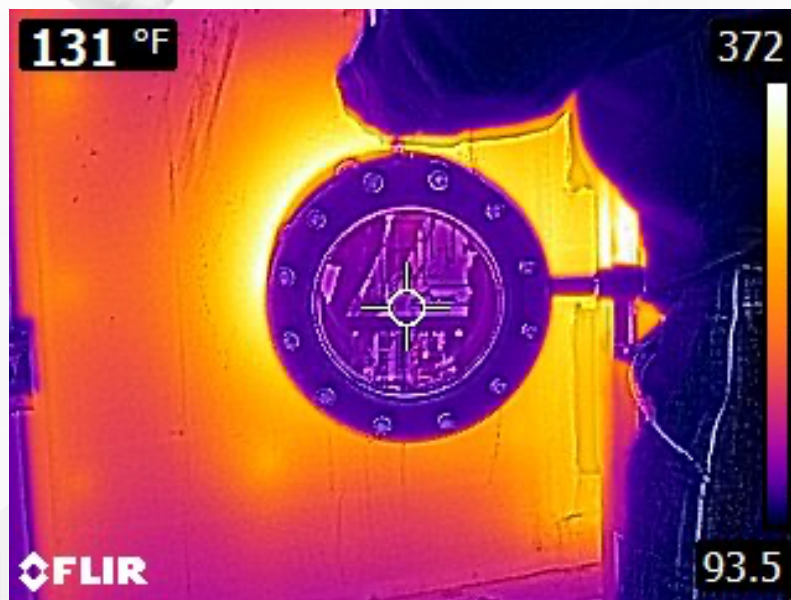


Figure 3 Multiple thermal breaks are designed in to lower the external temperatures.

- **Dual Pane Option**

Reduces the front surface temperatures to around 140 °F

FORNEY CLEARPORT

The following specifications are general:

Part Number: Single Glass	4" Diameter ClearPort P/N: VP-04.1 6" Diameter ClearPort P/N: VP-06.1 8" Diameter ClearPort P/N: VP-08.1
Part Number: Double Glass	4" Diameter ClearPort P/N: VP-04.2 6" Diameter ClearPort P/N: VP-06.2 8" Diameter ClearPort P/N: VP-08.2
Glass Pane:	Quartz Glass; Fused Silica for High Temperature
Body:	4", 6", 8" Schedule 40, 304 Stainless Steel
Isolation Plate:	.25" thick, 304 Stainless Steel
Rear Flange:	Pressure Class: 150, Raised Face, Sch 40, 304 Stainless steel
Gaskets:	High Temperature Ceramic Fiber Temperature Range: -50 to 2,300 Degrees F.
Cooling Air:	Flow: 6 scfm at 3" w.c. above duct pressure
Weight:	4" = 68 lbs., 6" = 91 lbs., 8" = 99 lbs. (45 Kg)
Welding:	All Welds AWS D1.6 or ASME B31.3
Design Temperature:	1,324 Degrees F.
Design Pressure:	69 MBAR (1.25 PSI)
Mounting Flange (by User):	ASME 4", 6", or 8" w/ bolt hole pattern straddling centerline
Mounting Adaptor	For installing 6" Clear Port on 4" Flange: P/N: VP-FLNG-04
Mounting Adaptor	For installing 6" Clear Port on TJ Model 15 Rectangular Flange P/N: VP-FLNG -15
Mounting Adaptor	For installing 6" Clear Port on TJ Model 15 wall studs, flush mount P/N: VP-FLNG-15F

Note: Adapters are available to fit other sizes, contact sales for more info